

The background of the slide is a light gray gradient with several realistic water droplets of various sizes scattered across it. The droplets have highlights and shadows, giving them a three-dimensional appearance. The text is centered in the middle of the slide.

LAKE REDSTONE PROTECTION DISTRICT ANNUAL MEETING

AUGUST 3, 2024

The background is a light gray gradient with several realistic water droplets of various sizes scattered around the edges. In the center, there is a faint, circular, textured pattern that resembles a ripple or a lens flare.

**Please silence
your cellphone**

AGENDA

- WELCOME 5 MITTELSTADT
- ELECTION OF 1 COMMISSIONERS 5 SULLIVAN
- MINUTES 2023 ANNUAL MEETING 5 KEEGSTRA
- SECRETARY'S REPORT 5 KEEGSTRA
- TREASURER'S REPORT 5 CROCKETT
- PROPOSED 2025 OPERATING BUDGET 10 CROCKETT

AGENDA (CONTINUED)

- REPORTS ON RECENT ACTIVITIES 40
 - WATER QUALITY ISSUES 20 KEEGSTRA
 - CONSERVATION DAY PROGRAM 20 HORNER/SULLIVAN
- INTRODUCE NEW COMMISSIONER 5 SULLIVAN
- QUESTION AND ANSWERS 15 LRPD BOARD



ELECTION OF 1 COMMISSIONER

PAT SULLIVAN



The background features a light gray gradient with several realistic water droplets of various sizes scattered in the corners. The droplets have highlights and shadows, giving them a three-dimensional appearance.

2023 ANNUAL MEETING MINUTES

KEN KEEGSTRA



SECRETARY'S REPORT

KEN KEEGSTRA





TREASURER'S REPORT

DAVE CROCKETT



BALANCE SHEET AS OF JULY 9, 2024

Current Assets			Liabilities		
Checking		\$ 116,680	Dredging Loan		\$ 1,853,700
Dredging Savings		89,374			
Maintenance Reserve		85,325			
	Total Current Assets	291,379		Total Liabilities	1,853,700
Other Assets			Net Worth (Deficit)		(1,328,375)
Land		233,946			
Total Assets		525,325	Total Liabilities and Fund Balance		\$ 525,325

FINANCIAL REVIEW FEBRUARY 5, 2024

- A FINANCIAL REVIEW WAS CONDUCTED BY HEIDI GEILS AND DON HAASL
- A TYPO WAS FOUND IN THE MAY-JUNE 2023 BOARD REPORT FOR ONE INVOICE. OTHER INVOICES WERE CHECKED AND FOUND IN ORDER.
- THE 2023 YEAR-END BALANCE SHEET WAS CHECKED AND FOUND IN ORDER.

PROPOSED INCOME 2025

	2023	2024	2024	2024	2024	2025
	Jan. - Dec.	Approved	Jan. - June	July - Dec.	Jan. - Dec.	Proposed
	Actual	Budget	Actual	Estimated	Estimated	Budget
Revenue & Reimbursement for Grants						
DNR Grant Funding (see below)						
- Aquatic Plant Management Plan	-	2,500	2,500	-	2,500	-
- Clean Boats/Clean Water Grant	1,000	4,000	2,747	-	2,747	4,000
- Surface Water Grant - Martin Meadowlark Weir	14,203	42,609		42,609	42,609	-
Sauk County Grant Funding (see below)						
- Martin Meadowlark Weir	4,069	4,069		4,069	4,069	-
- Stream Sampling	10,000	-	-	-	-	-
- Tributary Stream Sampling	8,137	8,138		8,138	8,138	-
Interest Income	4,184	1,000	1,501	2,100	3,601	3,000
General Tax Levy	105,800	110,936	73,957	36,979	110,936	115,200
Draw from Maintenance Fund		21,500	-	-	-	-
Other Income	2,000	-		4,000	4,000	2,000
Grant Advance Payment from previous year		37,283			-	-
Total Revenue:	149,393	232,034	80,705	97,895	178,600	124,200
Tax Levy						
- General	105,800	110,936	73,957	36,979	110,936	115,200
- Dredging	350,970	351,000		351,000	351,000	351,000
Total Tax Levy	456,770	461,936	73,957	387,979	461,936	466,200
Note: Special dredging levy approved on May 18th 2019						

PROPOSED EXPENSES 2025

	2023	2024	2024	2024	2024	2025
	Jan. - Dec.	Approved	Jan. - June	July - Dec.	Jan. - Dec.	Proposed
	Actual	Budget	Actual	Estimated	Estimated	Budget
Expenditures						
General						
- Buoys	821	1,000			-	1,000
- Commissioner Compensation	13,181	14,000	2,834	11,166	14,000	14,000
- Insurance	1,562	2,000	1,606	-	1,606	2,000
- Financial Review	6,000	1,000		-	-	1,000
- Legal Fees	1,512	3,500			-	3,500
- Office, Administration, and Mailing	3,656	3,000	607	3,000	3,607	4,500
- Professional meetings and memberships	1,877	3,000	3,661	750	4,411	4,000
Education and Outreach Funding						
- Newsletter	3,996	4,000	4,176		4,176	4,000
- PLRW Field Day		1,000		1,000	1,000	1,000
- Property owners for runoff incentive		10,000		10,000	10,000	15,000
- Sauk county lakes meeting		1,000			-	1,000
- Education workshop	168			4,500		1,000
- Shoreline assessment led by Sauk Co. intern						1,000
- Lake Champion Signs and/or Tours of Lake Properties						200
Plan Integration						
- Lake Mgt. Plan Sauk Cty. Yearly Employee Support		1,000			-	-
- Lake Mgt. Plan Consultant and Recommended Activities		20,000		18,000	18,000	20,000
- Producer Conservation Practices Incentives		2,000		2,000	2,000	2,000
Sediment Control						
- Design & Repair of Martin Meadowlark Weir	903	89,035	3,668	76,000	79,668	-
- Design & Repair of South Chickadee Bay	7,092	-	-	-	-	-
- Lake Maintenance and Erosion Control	447	8,000		2,000	2,000	8,000
- Watershed Improvement Funding	529	10,000	640		640	10,000
Water Quality						
- Aquatic Plant Management		15,000	3,105	7,500	10,605	15,000
- DNR Grant Clean Boats/Clean Water	3,195	4,500	427	4,500	4,927	5,000
- DNR Grant Aquatic Plant Management Plan	7,563	-		-	-	-
- Stream/Lake Monitoring, Sampling	19,950	6,000	240	2,760	3,000	6,000
- Tributary Stream Sampling	-	33,000	10,966	22,000	32,966	-
- Goose Control						5,000
Total Expenditures	72,449	232,035	31,930	165,176	192,606	124,200

BUDGET MOTION

I MOVE THAT WE APPROVE THE PROPOSED 2025 BUDGET WITH OPERATING EXPENSES OF \$124,200 AND AN OPERATING EXPENSE LEVY OF \$115,200.

The background features a light gray gradient with several realistic water droplets of various sizes scattered in the corners. The droplets have highlights and shadows, giving them a three-dimensional appearance. In the center, there is a faint, circular watermark logo consisting of concentric lines and a central emblem.

WATER QUALITY ISSUES

KEN KEEGSTRA

WATER QUALITY PROJECTS COMMITTEE

KEN KEEGSTRA, CHAIR

VOLUNTEERS: TOM ALBERT, BRIAN BESTOR, PAUL BURKE, CHUCK ECKLUND, DAVE FISCHER, KEN KIDD, SUE KIDD, JAY KOLB, KEN LAS, PAT LITZA, MATT MESSMER, PAT SULLIVAN, LAURIE VIDELE, TOM WAGNER, SUE WALTERS, TOM WALTERS

1. Aquatic Plant Issues
2. Update on lake water monitoring program
3. Connection to stream monitoring program (USGS)
4. Impact of geese on water quality

REVISED AQUATIC PLANT MANAGEMENT PLAN (MAY, 2023)

(AVAILABLE ON LRPD WEBSITE- WWW.LAKERESTONEPD.ORG)

Major points/some of the goals & recommendations

- PLANT POPULATIONS ARE DECLINING IN LAKE REDSTONE
- PROTECT NATIVE AQUATIC PLANTS
- **MONITOR AND MANAGE EURASIAN WATERMILFOIL TO MAINTAIN OCCURRENCE THAT ALIGNS WITH BENEFICIAL USE OF LAKE REDSTONE**

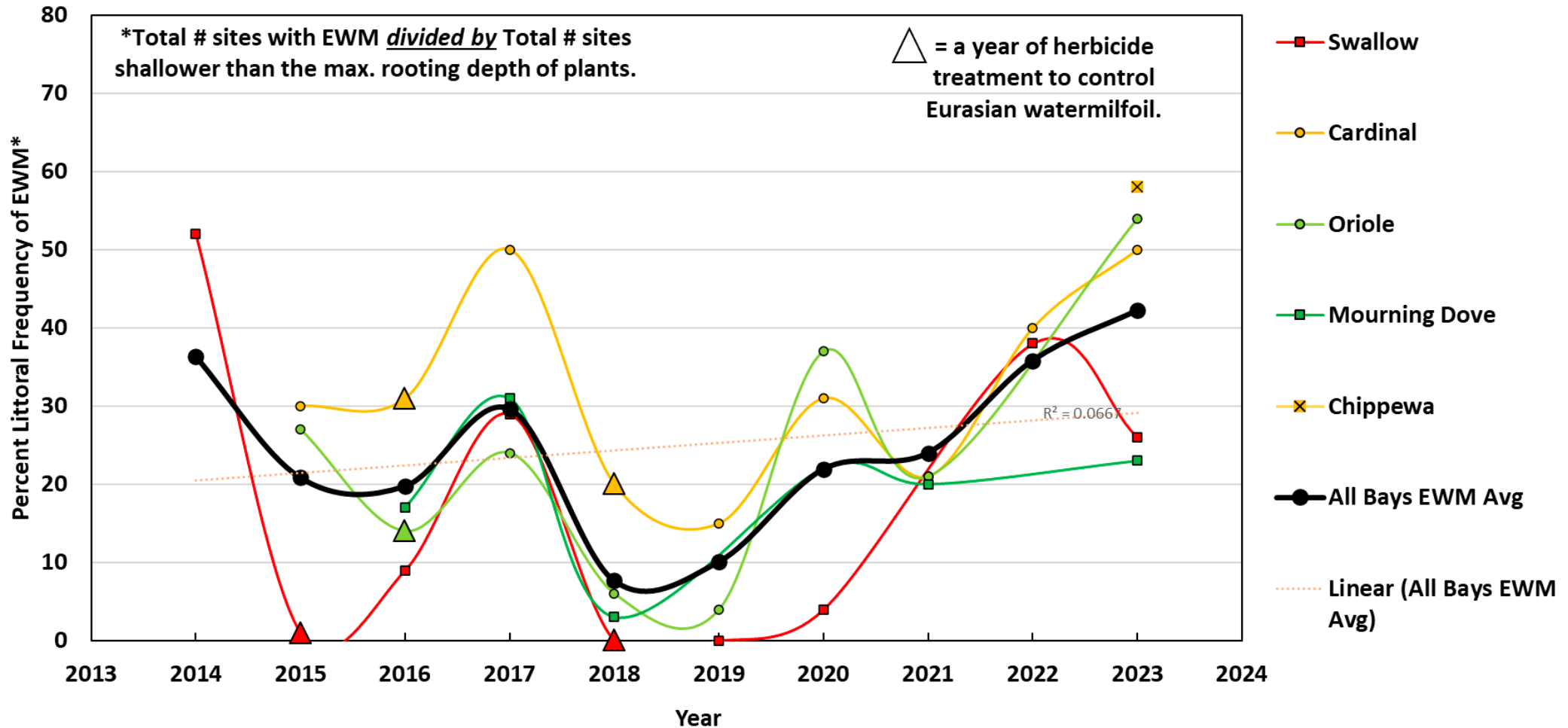
TWO TYPES OF ASSAYS USED TO MONITOR AQUATIC PLANTS

1. POINT INTERCEPT (PI) ASSAYS-**QUANTITATIVE ASSAYS FOR ALL PLANTS**
 - A. NEEDED TO REQUEST A PERMIT TO APPLY HERBICIDE
 - B. NOT PERFORMED ON EVERY BAY EVERY YEAR
2. SHORELINE SURVEYS FOR EURASIAN WATERMILFOIL
 - A. PERFORMED ALONG ENTIRE SHORELINE EVERY YEAR

RESULTS FROM PI SURVEYS

EURASIAN WATERMILFOIL FREQUENCY GRAPH

(FROM 2023 REPORT-FULL REPORT AVAILABLE ON LRPD WEB SITE)



SHORELINE SURVEYS FOR EURASIAN WATERMILFOIL

(FROM 2023 REPORT-FULL REPORT AVAILABLE ON LRPD WEBSITE)

EWM Densities	2022 Acres (est)	2023 Acres (est)
Highly Scattered	8.2	9.58
Scattered	4.3	7.56
Moderately Dense	6.6	3.44
Dense	12.8	0.56

Quantity and location of EWM is highly variable from one year to the next.

WATER QUALITY PROJECTS COMMITTEE

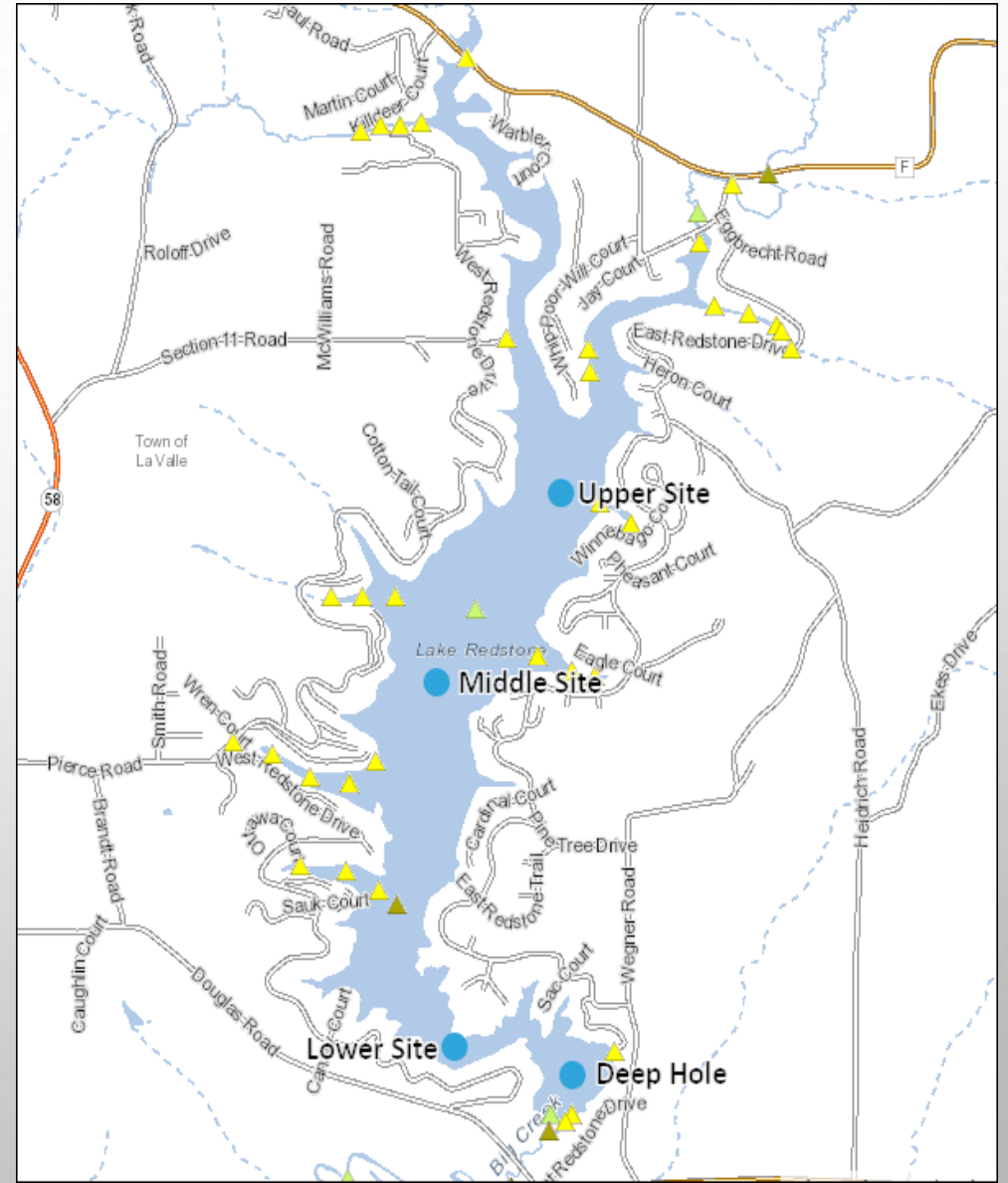
KEN KEEGSTRA, CHAIR

VOLUNTEERS: TOM ALBERT, BRIAN BESTOR, PAUL BURKE, CHUCK ECKLUND, DAVE FISCHER, KEN KIDD, SUE KIDD, JAY KOLB, KEN LAS, PAT LITZA, MATT MESSMER, PAT SULLIVAN, LAURIE VIDELE, TOM WAGNER, SUE WALTERS, TOM WALTERS

1. Aquatic Plant Issues
2. Update on lake water monitoring program
3. Connection to stream monitoring program (USGS)
4. Impact of geese on water quality

WDNR AND LRPD VOLUNTEERS HAVE MONITORED LAKE WATER FOR MORE THAN 40 YEARS

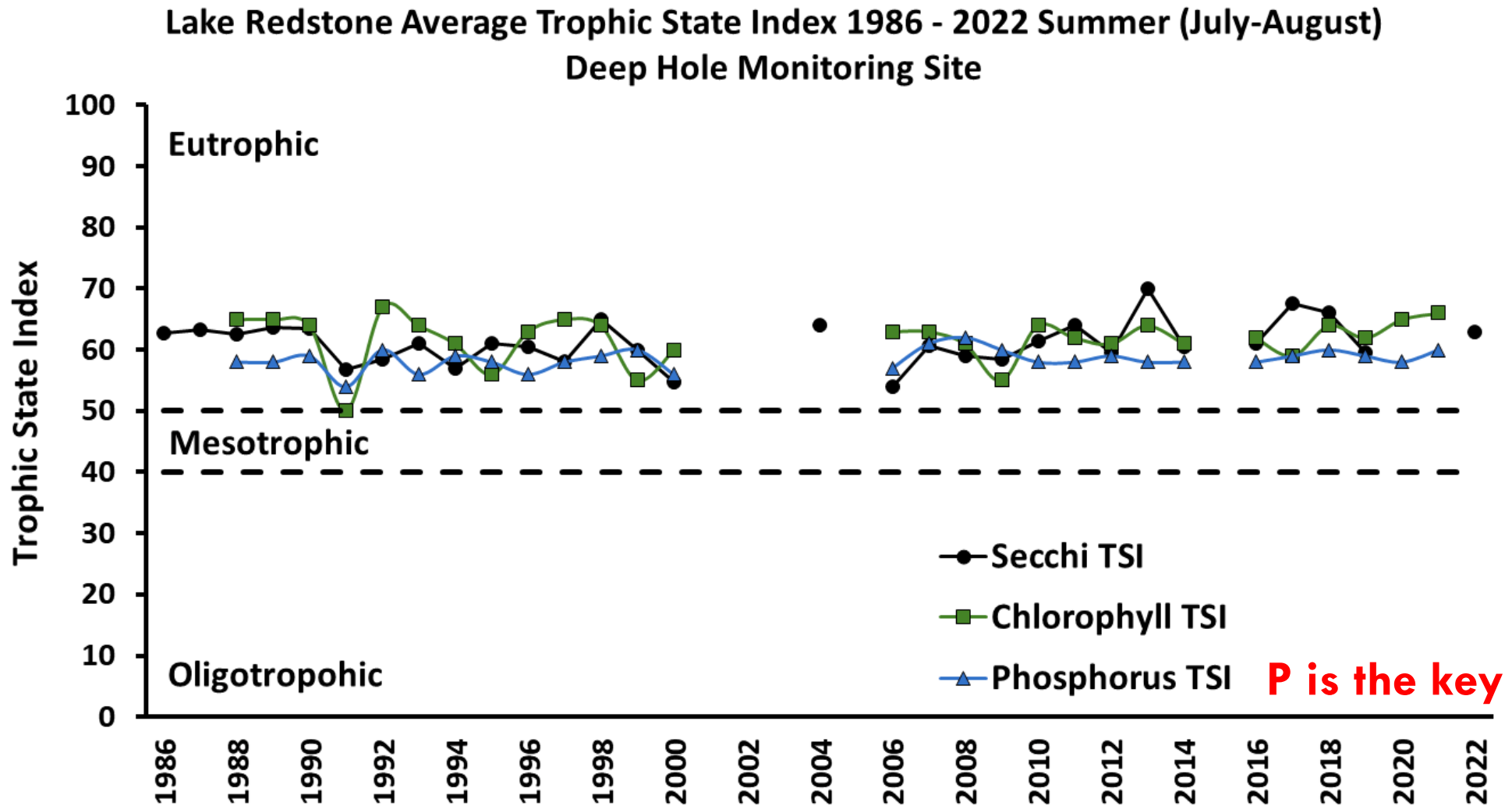
- Sampling performed at 3 locations
- Measure water clarity with Secchi disk
- Measure oxygen levels at various depths
- Take water samples for lab analysis of
 - ▶ Total phosphorus
 - ▶ Chlorophyll (in summer months)
- Additional sampling is underway in 2024



TROPHIC STATE INDEX IN LAKE REDSTONE

SUMMARY OF DATA FROM DEEP HOLE

LOTS OF DATA CONDENSED TO A SINGLE POINT



WATER QUALITY PROJECTS COMMITTEE

KEN KEEGSTRA, CHAIR

VOLUNTEERS: TOM ALBERT, BRIAN BESTOR, PAUL BURKE, CHUCK ECKLUND, DAVE FISCHER, KEN KIDD, SUE KIDD, JAY KOLB, KEN LAS, PAT LITZA, MATT MESSMER, PAT SULLIVAN, LAURIE VIDELE, TOM WAGNER, SUE WALTERS, TOM WALTERS

1. Aquatic Plant Issues
2. Update on lake water monitoring program
3. Connection to stream monitoring program (USGS)
4. Impact of geese on water quality

STREAM SAMPLING PROGRAM JOINT WITH USGS

1. Begun in fall 2020 with support from Sauk County and Juneau County-cost share from USGS
2. Autosamplers set up on Clark Rd and La Valle Rd
3. Continued for 3 years
4. Provides data on phosphorus and sediment coming from the northern part of watershed



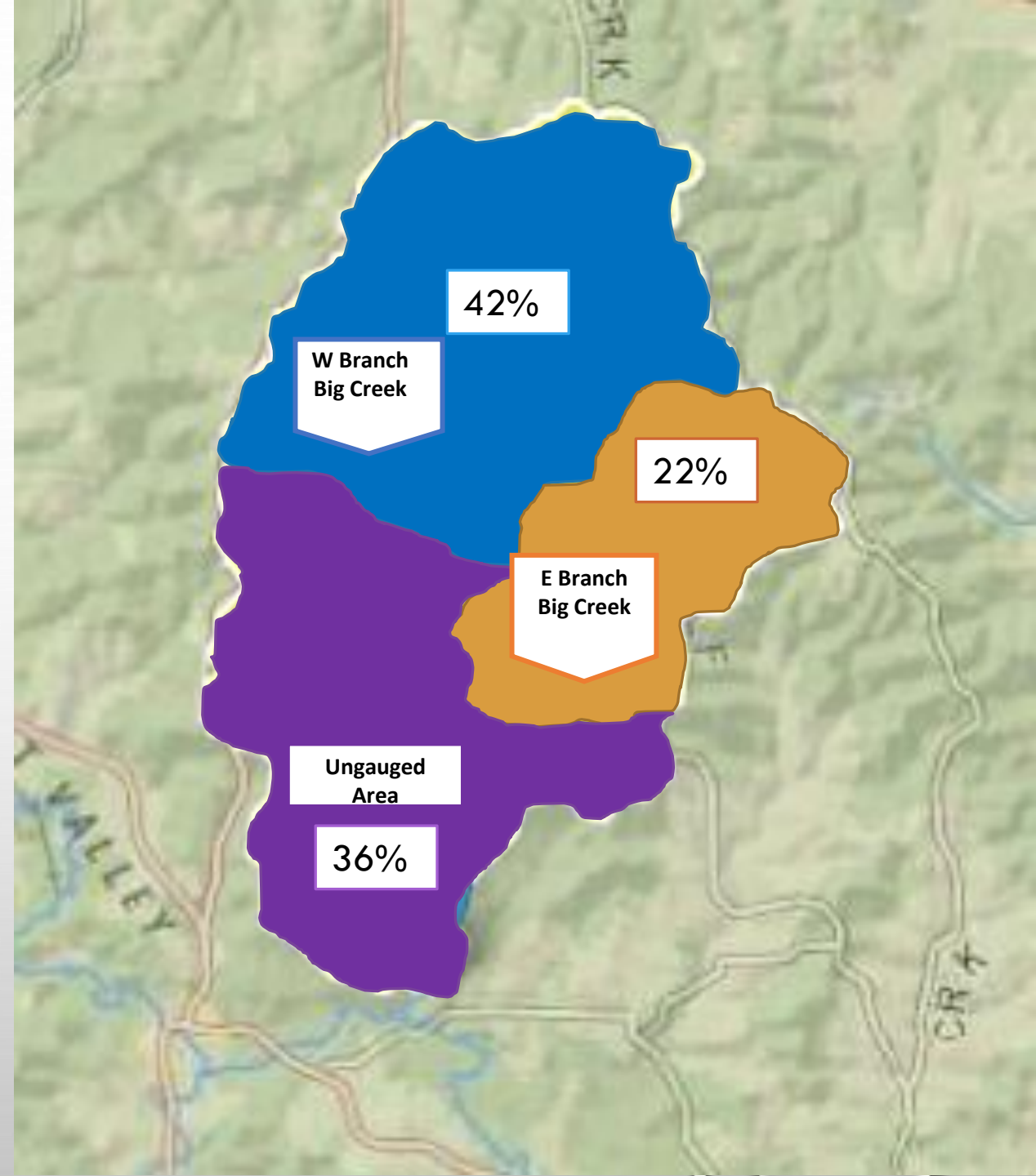
LAKE REDSTONE WATERSHED

28.8 SQ MILES

W Branch Big Creek @ Clark Rd = 12 mi² = 42%

E Branch Big Creek @ Lavelle Rd = 6.38 mi² = 22%

Ungauged Area = 10.42 mi² = 36%



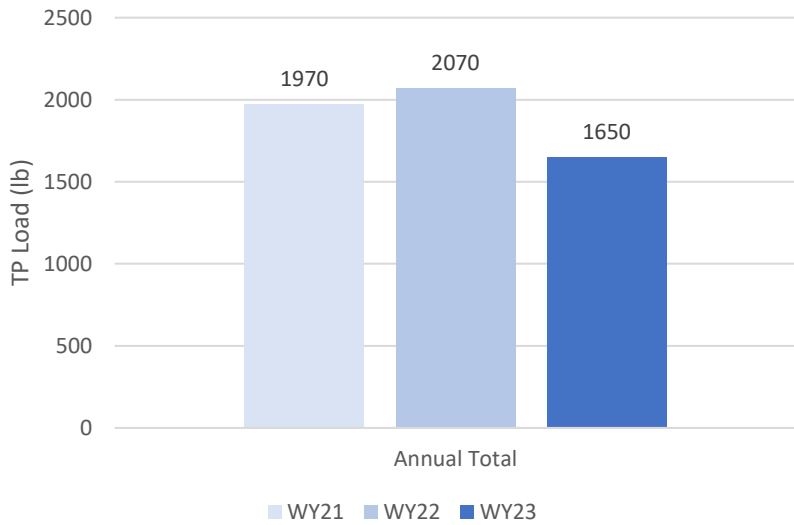
USGS-LAKE REDSTONE STREAM MONITORING



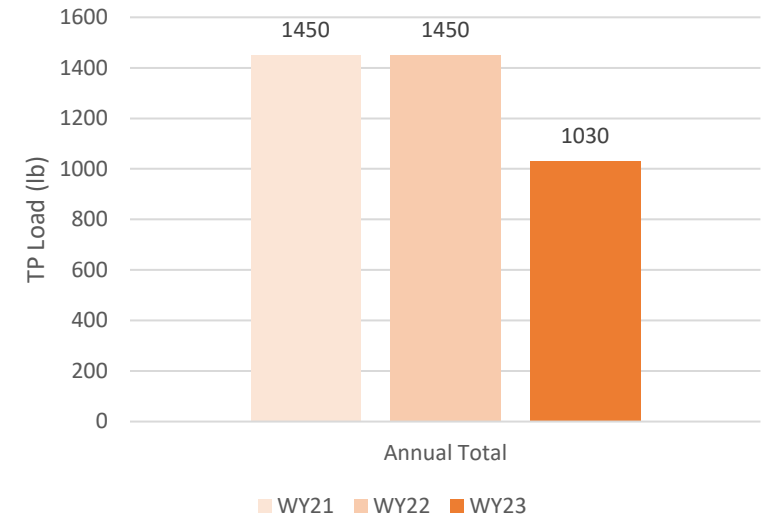
TOTAL PHOSPHORUS (TP) RESULTS

3 YEAR COMPARISON

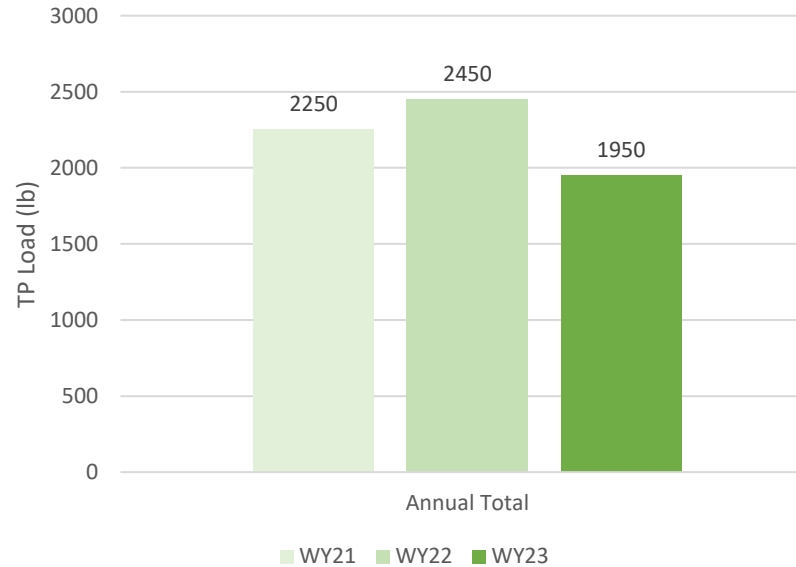
W Branch Big Creek Annual TP



E Branch Big Creek Annual TP

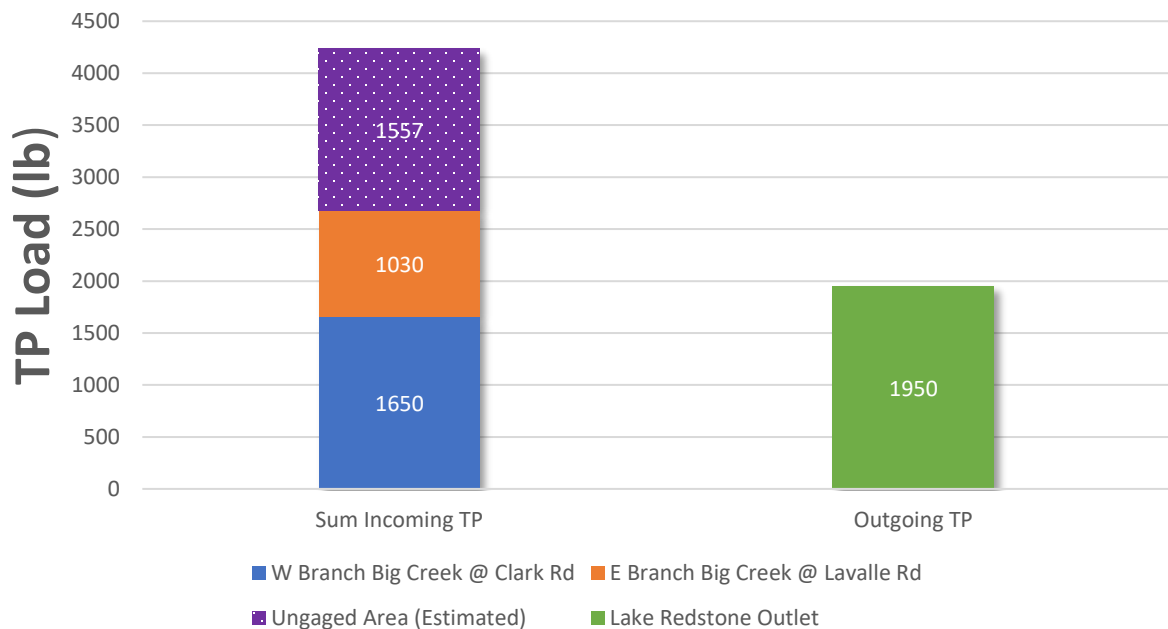


Lake Redstone Outlet Annual TP

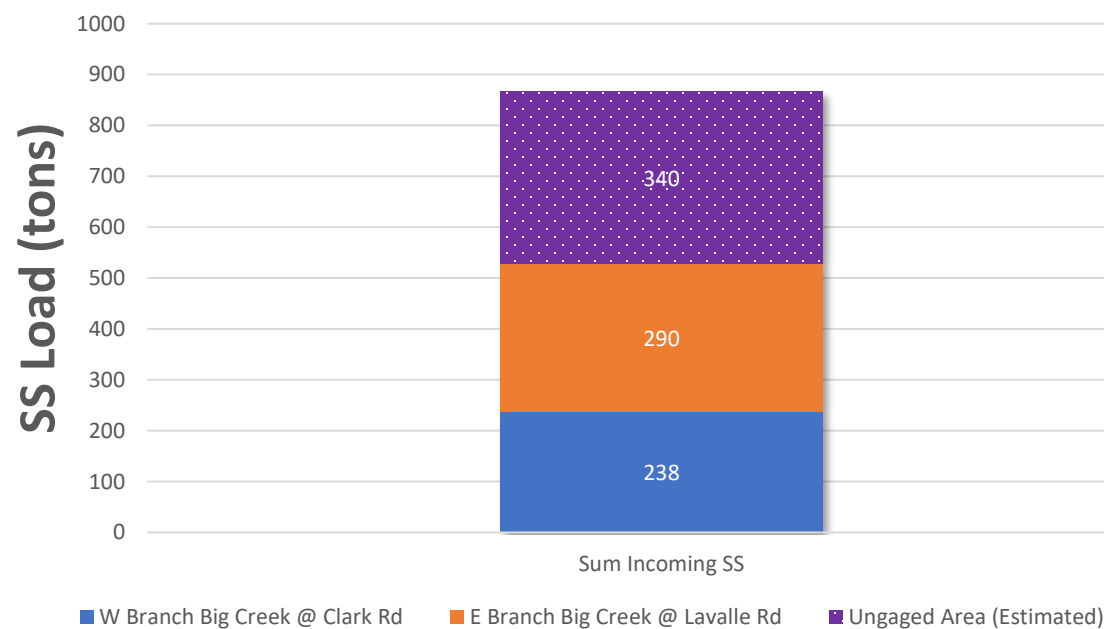


WY23 ESTIMATED UNGAUGED AREA LOADS

WY23 Annual TP Loads



WY23 Annual SS Loads



Ungauged Area is a significant contributor to TP and SS

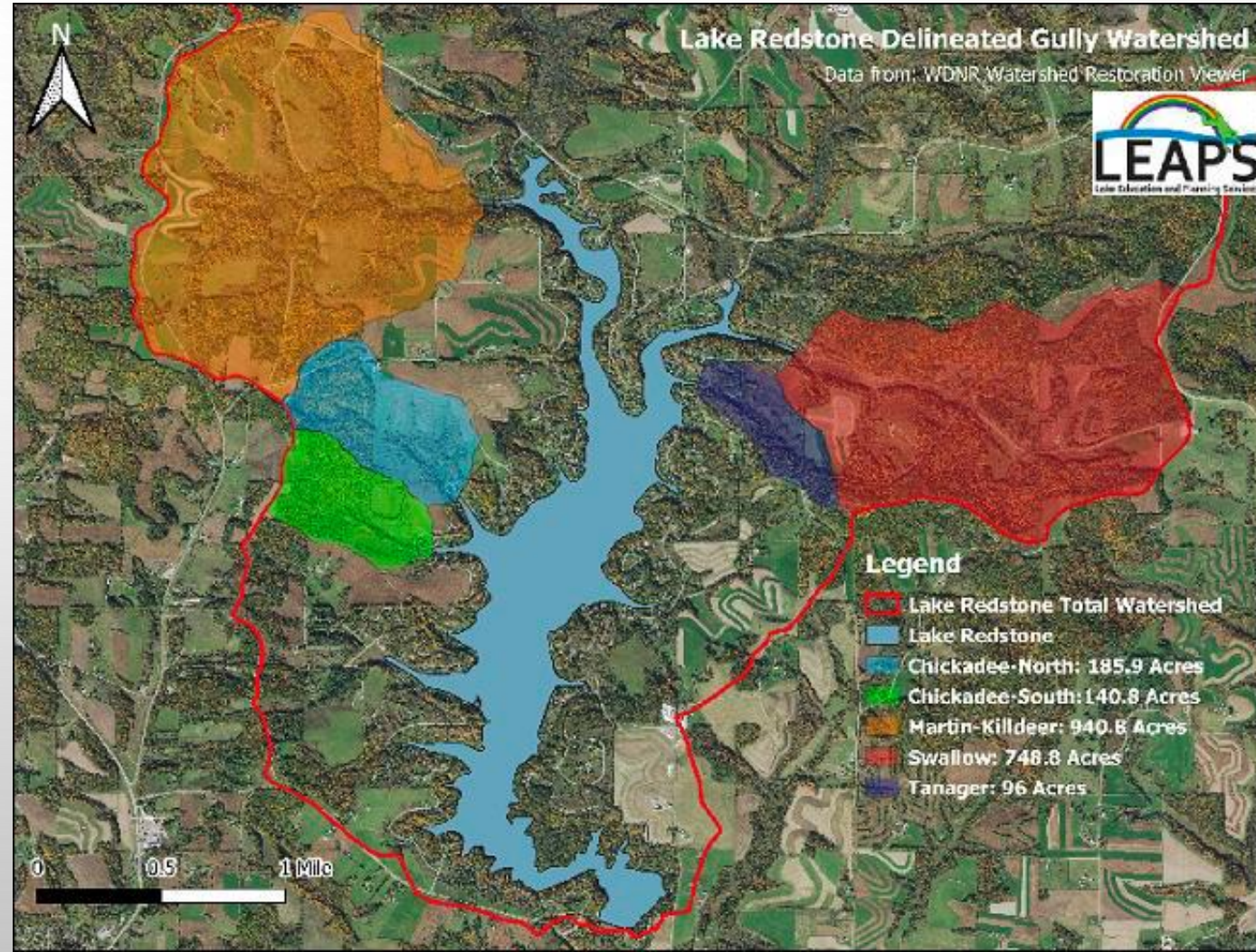
Ungauged Area = Property around the lake + several small streams

SUB-REGIONS OF WATERSHED IN UNGAUGED AREA

In 2024 measuring TP and sediment (SS) entering Lake Redstone at:
Redstone at:

Martin-Meadowlark Bay
Swallow Bay
Eagle Bay

Results will be available in
November 2024



WATER QUALITY PROJECTS COMMITTEE

KEN KEEGSTRA, CHAIR

VOLUNTEERS: TOM ALBERT, BRIAN BESTOR, PAUL BURKE, CHUCK ECKLUND, DAVE FISCHER, KEN KIDD, SUE KIDD, JAY KOLB, KEN LAS, PAT LITZA, MATT MESSMER, PAT SULLIVAN, LAURIE VIDELE, TOM WAGNER, SUE WALTERS, TOM WALTERS

1. Aquatic Plant Issues
2. Update on lake water monitoring program
3. Connection to stream monitoring program (USGS)
4. Impact of geese on water quality

GEESE CAUSE MANY PROBLEMS

- 1. Each goose eats up to 3 lbs of vegetation per day and produces up to 2 lbs of feces.**
- 2. Removal of vegetation increases runoff**
- 3. Feces are unpleasant and are rich in P and N- two nutrients that cause eutrophication**



From article on goose problems on LRPD website (under Reports)

STATUS OF GOOSE PROBLEMS ON LAKE REDSTONE

- 87 NESTS ALONG SHORELINE IN SPRING OF 2024 (SURVEY BY KK, SK, SW, TW)
- EACH MATING PAIR PRODUCES 3-5 GOSLINGS
- GEESE RETURN TO THE LAKE WHERE THEY WERE HATCHED
- ALREADY HUNDREDS OF GEESE THIS YEAR; POTENTIAL FOR MORE NEXT YEAR
- **EXPLORING AVENUES TO REDUCE SIZE OF GOOSE POPULATION**
- NO EASY SOLUTIONS!

The background is a light gray gradient. In the top-left and bottom-right corners, there are several realistic water droplets of various sizes, some overlapping. The droplets have highlights and shadows, giving them a three-dimensional appearance. In the center of the page, there is a faint, circular watermark logo of the University of Wisconsin-Madison.

CONSERVATION DAY PROGRAM

BRAD HORNER/PAT SULLIVAN

CONSERVATION DAY PROGRAM

- GOALS AND OBJECTIVES
 - SOIL HEALTH DEMO
 - ROTATIONAL GRAZING DEMO
 - RAINFALL SIMULATOR
 - LRPD SHORELINE OPTIONS
- DINNER
- SUMMARY

EVENT WELCOME



SOIL HEALTH DEMO



ROTATIONAL GRAZING DEMO



RAINFALL SIMULATOR



LRPD SHORELINE OPTIONS





INTRODUCE NEW COMMISSIONER

PAT SULLIVAN

Mike Mittelstadt was unanimously reelected to a new term as commissioner.

THANK YOU TO OUR BOARD

DAVE CROCKETT

BRAD HORNER

KEN KEEGSTRA

PAT SULLIVAN

RAY DEMANSKI

PETER KINSMAN



THANK YOU TO OUR SPOUSES

JEANNINE CROCKETT

KIM HORNER

SUE KEEGSTRA

BARB MITTELSTADT

JEAN SULLIVAN

QUESTIONS & COMMENTS

- **LIMITED TO 1 QUESTION/COMMENT PER PERSON AND A MAXIMUM OF 3 MINUTES**
- **PLEASE IDENTIFY YOURSELF FOR THE RECORD**



THANK YOU!

FOR MORE INFORMATION:

WWW.LAKEREDSTONEPD.ORG

LRPD.BOARD@GMAIL.COM

EXTRAS

Fire Number Map

Lake Redstone Detail

Sauk County, WI T. 13N - R. 3 E.

